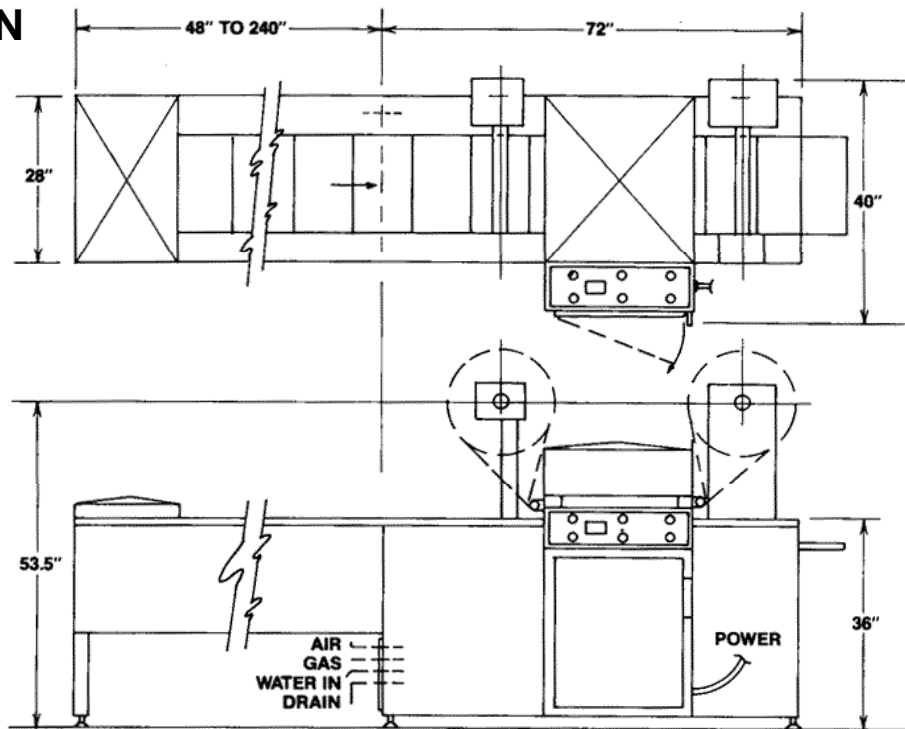


# WESTLUND MODEL 1000

## FLOOR PLAN



### MODEL 4000 PRODUCT BENEFITS:

- Versatile tooling accommodates individual package sizes from 1" x 2" to 10" x 24" with a maximum package depth of 5".
- The unique gas back fill feature enables the systems to achieve residual oxygen levels of less than 1% from package to package. Up to three gases may be mixed and back filled on line.
- Comprehensive programs can be engineered from the packaging machine and filling systems to the cartoning system with all interfacing including the necessary operational safety alarms.
- Service and spare parts are readily available.

### Specifications:

Power:	208/220 V. AC 480 optional
Drive motor:	1 1/2 HP DC
Vacuum:	Self-contained

At your request, a company representative will analyze your application and recommend the proper equipment

# WESTLUND

## ENGINEERING INC.

12400 44<sup>TH</sup> STREET NORTH, CLEARWATER, FL 33762 P 727.572.4343 F 727.572.6811  
WEBSITE: WWW.WESTLUNDENG.COM EMAIL: WESTLUND@WESTLUNDENG.COM